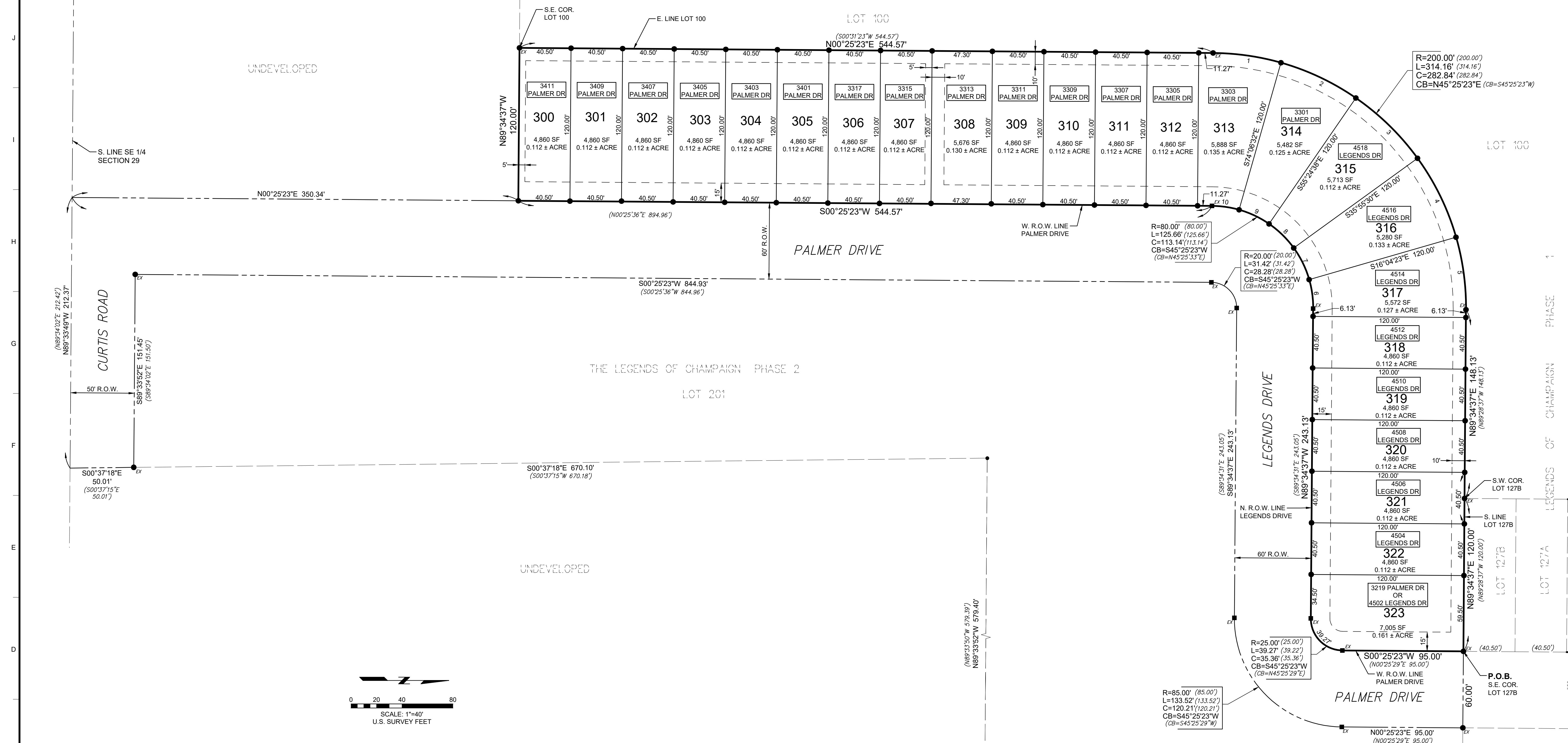


# THE LEGENDS OF CHAMPAIGN PHASE 3 FINAL PLAT

A PART OF THE S.E. 1/4 OF SECTION 29, TOWNSHIP 19 NORTH, RANGE 8 EAST  
OF THE THIRD PRINCIPAL MERIDIAN, CITY OF CHAMPAIGN, CHAMPAIGN COUNTY, ILLINOIS

THE LEGENDS OF CHAMPAIGN PHASE 1



CURVE	CHORD	ARC	RADIUS	CHORD BEARING
1	53.83'	53.99'	200.00'	N08°09'26"E
2	64.98'	65.27'	200.00'	N25°14'25"E
3	67.69'	68.02'	200.00'	N44°19'56"E
4	68.95'	69.30'	200.00'	N64°00'03"E
5	57.38'	57.58'	200.00'	N82°10'29"E
6	22.95'	23.03'	80.00'	S82°10'30"W
7	27.58'	27.72'	80.00'	S64°00'03"W
8	27.08'	27.21'	80.00'	S44°19'53"W
9	25.99'	26.11'	80.00'	S25°14'27"W
10	21.53'	21.60'	80.00'	S08°09'26"W

- LEGEND**
- SET 5/8" DIAMETER BY 30" LONG REBAR WITH PLASTIC CAP STAMPED "FARNSWORTH GROUP"
  - SET 5/8" DIAMETER BY 30" LONG IRON ROD WITH PLASTIC CAP STAMPED "FARNSWORTH GROUP" IN CONCRETE
  - EX FOUND IRON PIN IN CONCRETE WITH CAP STAMPED "3738"
  - FOUND IRON PIN
  - BOUNDARY LINE
  - - - LOT LINE
  - · - · - ADJACENT LOT LINE
  - · - · - RIGHT-OF-WAY LINE
  - · - · - GENERAL UTILITY AND DRAINAGE EASEMENT
  - 62.15' MEASURED DATA
  - (61') RECORD DATA
  - 3411 PALMER DR STREET ADDRESS AS ASSIGNED BY THE CITY OF CHAMPAIGN ENGINEERING DEPARTMENT

**OWNER/DEVELOPER**  
THE LEGENDS OF CHAMPAIGN, LLC  
608 KINGSLEY ST., SUITE A  
NORMAL, IL 61761  
PH. 217-355-1202

BY: THE LEGENDS OF CHAMPAIGN, LLC

DATE:

**APPROVED:**

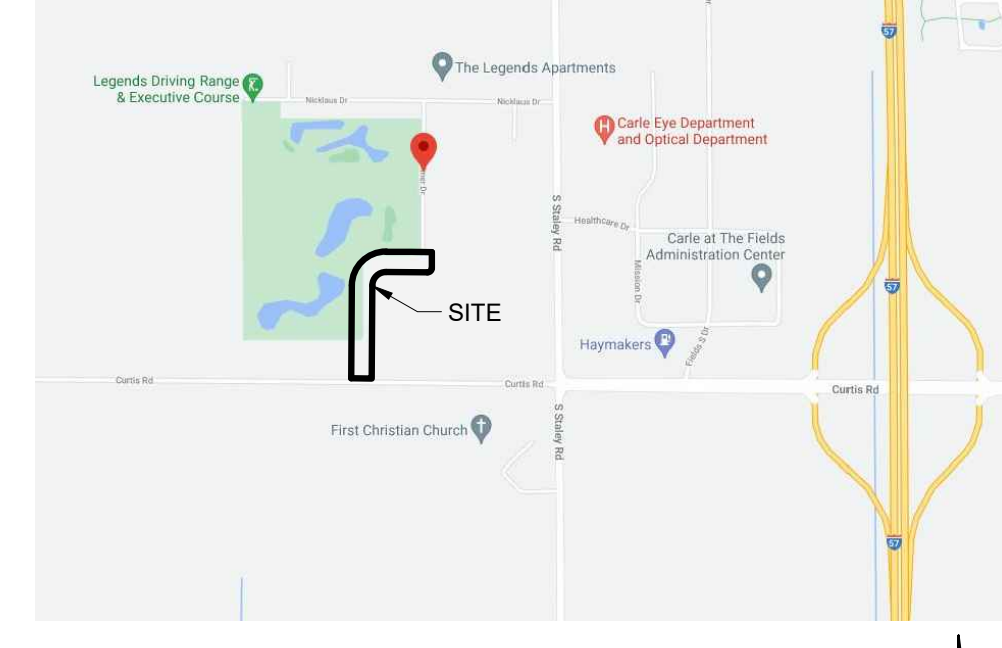
THE CITY COUNCIL OF THE CITY OF CHAMPAIGN,  
ILLINOIS IN ACCORDANCE WITH COUNCIL

BILL NO. \_\_\_\_\_

DATE: \_\_\_\_\_

BY: \_\_\_\_\_  
(MAYOR)

ATTEST: \_\_\_\_\_  
(CITY CLERK)



**Farnsworth GROUP**  
2211 WEST BRADLEY AVENUE  
CHAMPAIGN, ILLINOIS 61821  
(217) 352-7408 / info@f-w.com

www.f-w.com  
Engineers | Architects | Surveyors | Scientists

ISSUE:  
# DATE: DESCRIPTION:  
1 06/11/2021 REVISE LOT NUMBERS

PROJECT:  
CITY OF CHAMPAIGN

**THE LEGENDS OF CHAMPAIGN PHASE 3**

CHAMPAIGN, ILLINOIS

DATE: 5/28/2021

DESIGNED:

DRAWN: MBB

REVIEWED: WJM

FIELD BOOK NO.:

SHEET TITLE:  
**FINAL PLAT**

SHEET NUMBER:  
**1**

PROJECT NO.: 0210173.00