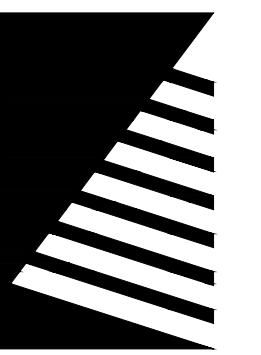


THORNEWOOD LSRD SUBDIVISION PHASE 2

PART OF THE NORTH HALF OF SECTION 11, TOWNSHIP 20 NORTH,
RANGE 7 EAST OF THE THIRD PRINCIPAL MERIDIAN, VILLAGE OF
MAHOMET, CHAMPAIGN COUNTY, ILLINOIS

*FINAL PLAT SHALL DETERMINE ALL FINAL LOT DIMENSIONS

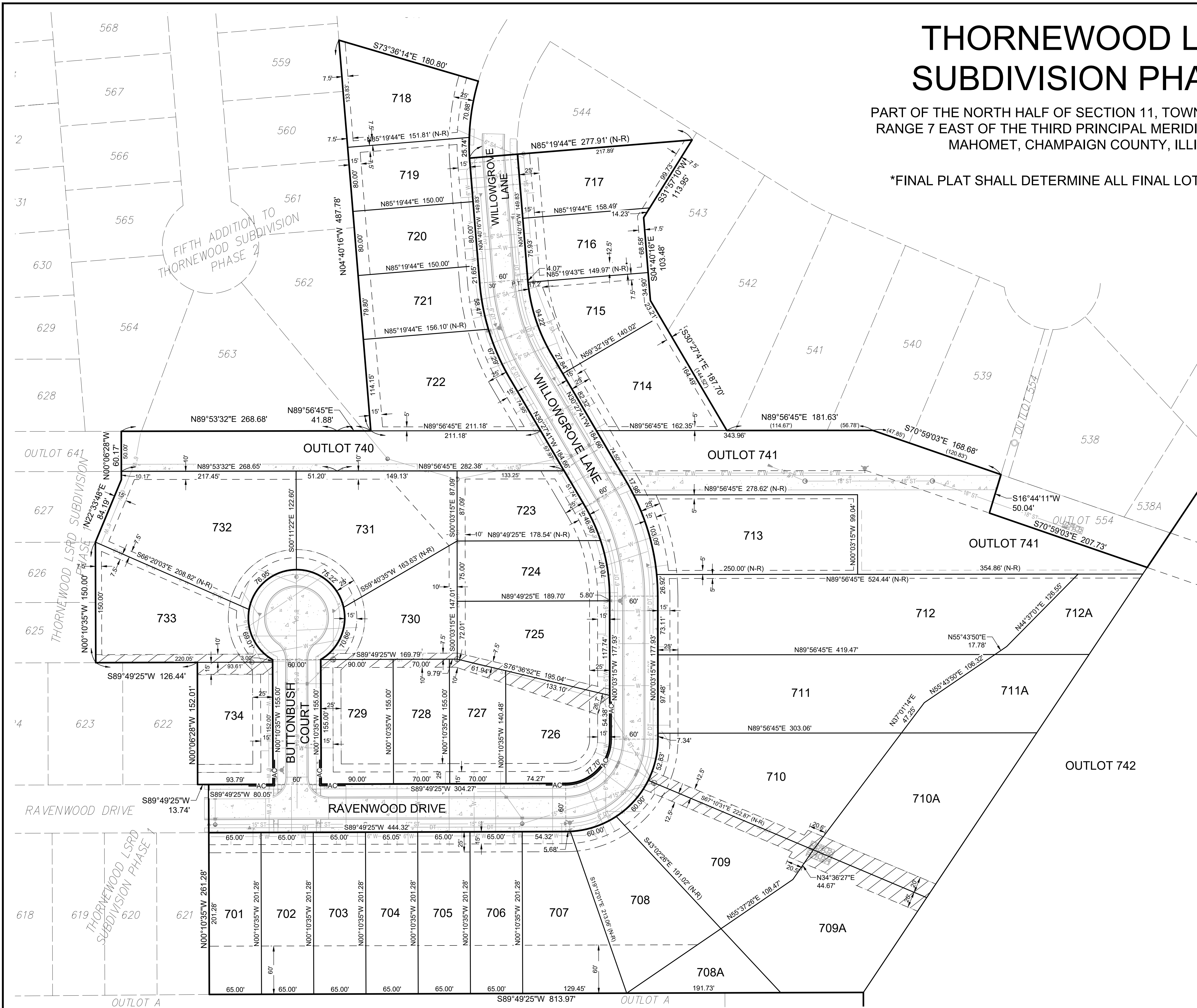
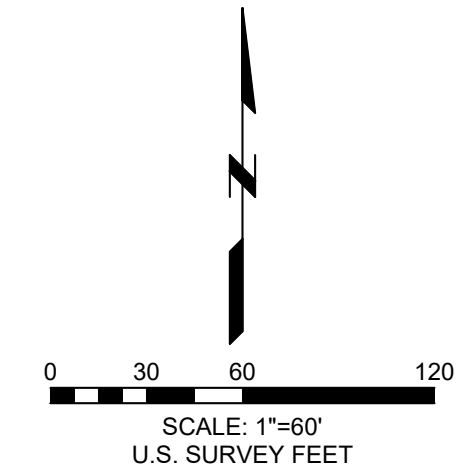


**Farnsworth
GROUP**

2709 MCGRAW DRIVE
BLOOMINGTON, ILLINOIS 61704
(309) 663-8435 / info@f-w.com

www.f-w.com
Engineers | Architects | Surveyors | Scientists

ISSUE:
DATE: DESCRIPTION:



LOT NUMBER	AREA (SQ FT)	WIDTH AT FRONT SETBACK (FT)
701	13,083	65.0
702	13,083	65.0
703	13,083	65.0
704	13,083	65.0
705	13,083	65.0
706	13,083	65.0
707	19,072	68.7
708	19,654	72.2
708A	7,660	
709	21,448	72.4
709A	27,144	
710	28,439	71.7
710A	30,772	
711	34,411	97.5
711A	14,721	
712	47,359	100.0
712A	9,663	
713	25,847	99.0
714	17,279	97.0
715	13,003	110.4
716	12,049	80.0
717	15,066	73.9
718	16,407	81.0
719	12,019	80.0
720	12,000	80.0
721	12,088	79.8
722	21,857	124.7
723	13,721	86.9
724	13,972	75.0
725	17,998	111.7
726	116,267	181.7
727	10,413	70.0
728	10,850	70.0
729	13,950	65.0 SOUTH 130.0 WEST
730	15,333	80.2
731	26,040	119.4
732	31,166	127.9
733	21,073	77.1
734	14,242	68.8 SOUTH 127.0 EAST

Thornewood LSRD Subdivision Phase 2

Mahomet, Illinois

DATE: 04/24/2023

DESIGNED: -

DRAWN: -

REVIEWED: -

FIELD BOOK NO.: -

SHEET TITLE:

SALES MAP

SHEET NUMBER:

1

PROJECT NO.: 0211884.00