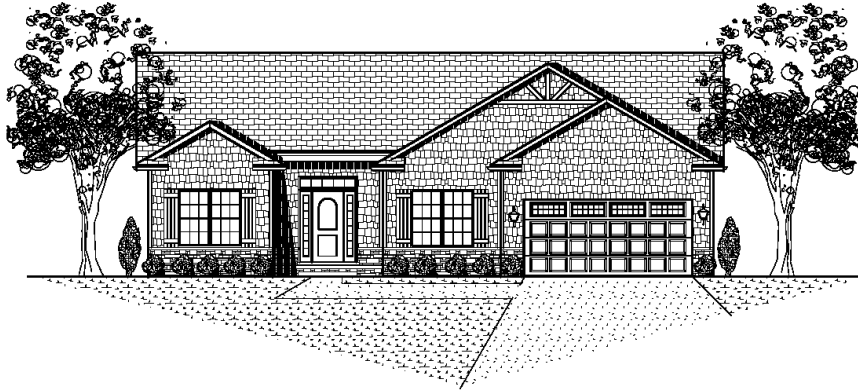


The Kensington

Offered at 269,900



Home Highlights

- 1748 sq. ft. plus 686 sq. ft. finished basement
- 4 bedrooms, 3 baths
- 2 car garage
- Custom Amish cabinetry w/ granite tops
- Hardwood and ceramic tile flooring
- Master suite with walk in closet
- Master bath with wood tub fronts and shower
- Satin Nickel finishes
- Great room w/ stepped ceiling and
- Corner fireplace w/custom built mantle
- Finished basement includes fourth bedroom, Recreation room and full bath
- Custom closets throughout

Community Highlights

Located minutes from town at Towanda Barnes Road and Route 9. Our subdivision is dissected by a tree lined boulevard. Inviting landscaped entrances and Berms! Harvest Pointe includes zero lot lines and single family homes.



SIGNATURE HOMES
YOUR NAME IS WRITTEN ALL OVER IT

1607 Visa Drive Suite 7, Normal, IL 61761
Office: 309.862.0525 Fax: 309.862.0526
www.signaturehomes.ws

