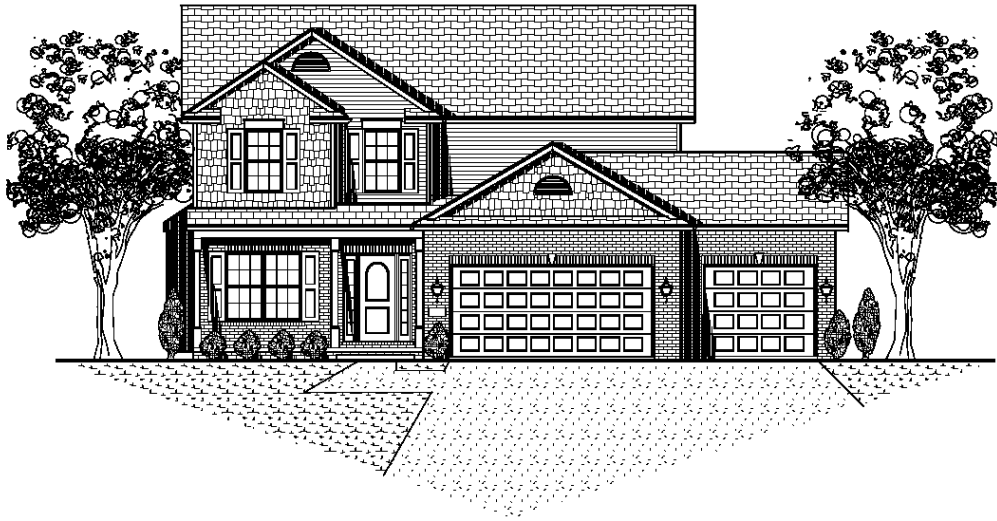


The Brompton Oops SOLD!



Home Highlights

- 2119 sq. ft. plus 488 sq. ft. finished basement
- 4 bedrooms, 3.5 baths
- 3 car garage
- Custom Amish cabinetry w/ granite tops
- Hardwood and ceramic tile flooring
- Master suite with his and her closets
- Master bath with whirlpool tub and shower
- Satin Nickel finishes
- Great room w/ custom mantle
- Main floor laundry
- Finished basement includes recreation room and full bath

Community Highlights



Located minutes from town at Towanda Barnes Road and Route 9. Our subdivision is dissected by a tree lined boulevard. Inviting landscaped entrances and Berms! Harvest Pointe includes zero lot lines and single family homes.



SIGNATURE HOMES
YOUR NAME IS WRITTEN ALL OVER IT

1607 Visa Drive Suite 7, Normal, IL 61761
Office: 309.862.0525 Fax: 309.862.0526
www.signaturehomes.ws

