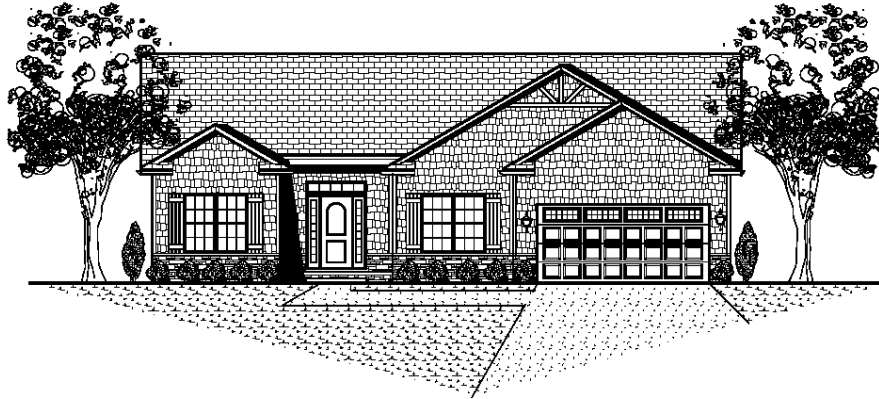


# The Kensington

## Offered at \$263,900



### Home Highlights

- 1748 plus 686 sq. ft. finished basement
- 4 bedrooms, 3 baths
- 2 car garage
- Custom Amish cabinetry w/ granite tops
- Large walk in pantry
- Hardwood and ceramic tile flooring
- Master suite with spacious walk in closet
- Master bath with whirlpool tub and shower
- Satin Nickel finishes
- Great room w/ custom mantle
- Formal dining room w/custom bookshelves
- Finished basement includes rec room, full bath and bedroom #4

### Community Highlights



Located minutes from town at Towanda Barnes Road and Route 9. Our subdivision is dissected by a tree lined boulevard. Inviting landscaped entrances and Berms! Harvest Pointe includes zero lot lines and single family homes.



**SIGNATURE HOMES**  
YOUR NAME IS WRITTEN ALL OVER IT

1607 Visa Drive Suite 7, Normal, IL 61761  
Office: 309.862.0525 Fax: 309.862.0526  
[www.signaturehomes.ws](http://www.signaturehomes.ws)

