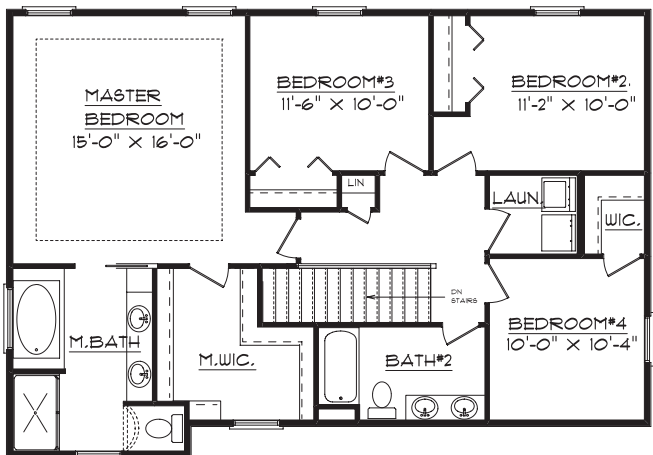


2209 W. Earl Court Peoria, IL 61615

Plan Summary

First Floor	1103 Sq. Ft.
Second Floor	1105 Sq. Ft.
TOTAL	2208 Sq. Ft.
Basement	617 sq. ft. Finished



The Martin

7227 N. University Ave, Peoria IL 61614
Office: 309.693.6179 Fax: 309.693.6187
www.signaturehomes.ws