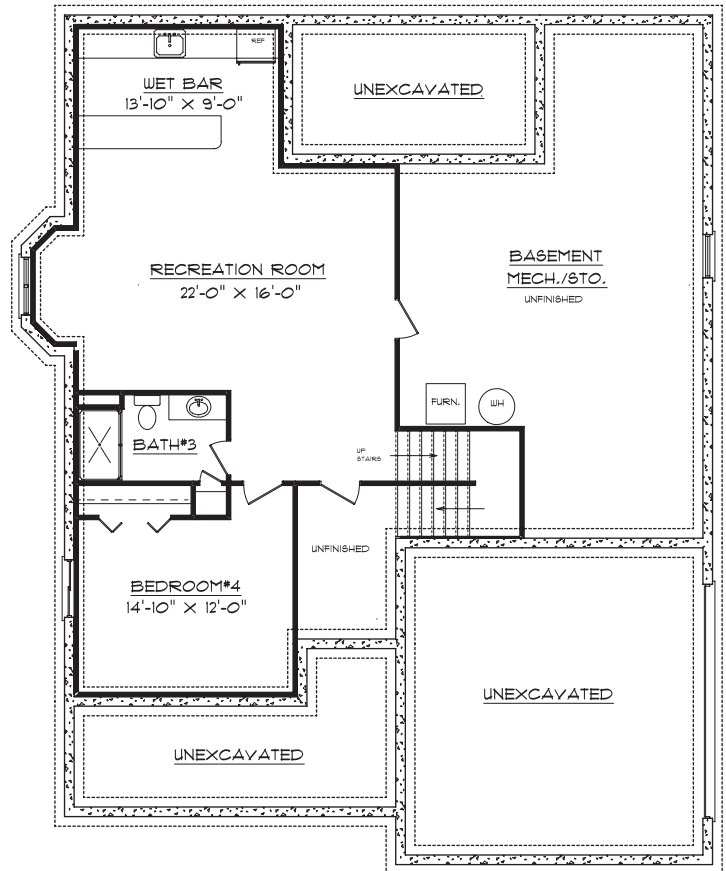


**Lot 251 Stone Creek
2746 Stone Creek Blvd.
Urbana, IL 61801**

Plan Summary

First Floor	1752 sq.ft.
Finished Basement	892 sq.ft.
TOTAL Finished	2644 sq.ft.



The Matisse

4120 Belmont Point, Champaign, IL 61822
Telephone (217)355-1202 Fax (217)355-3806
www.signaturehomes.ws