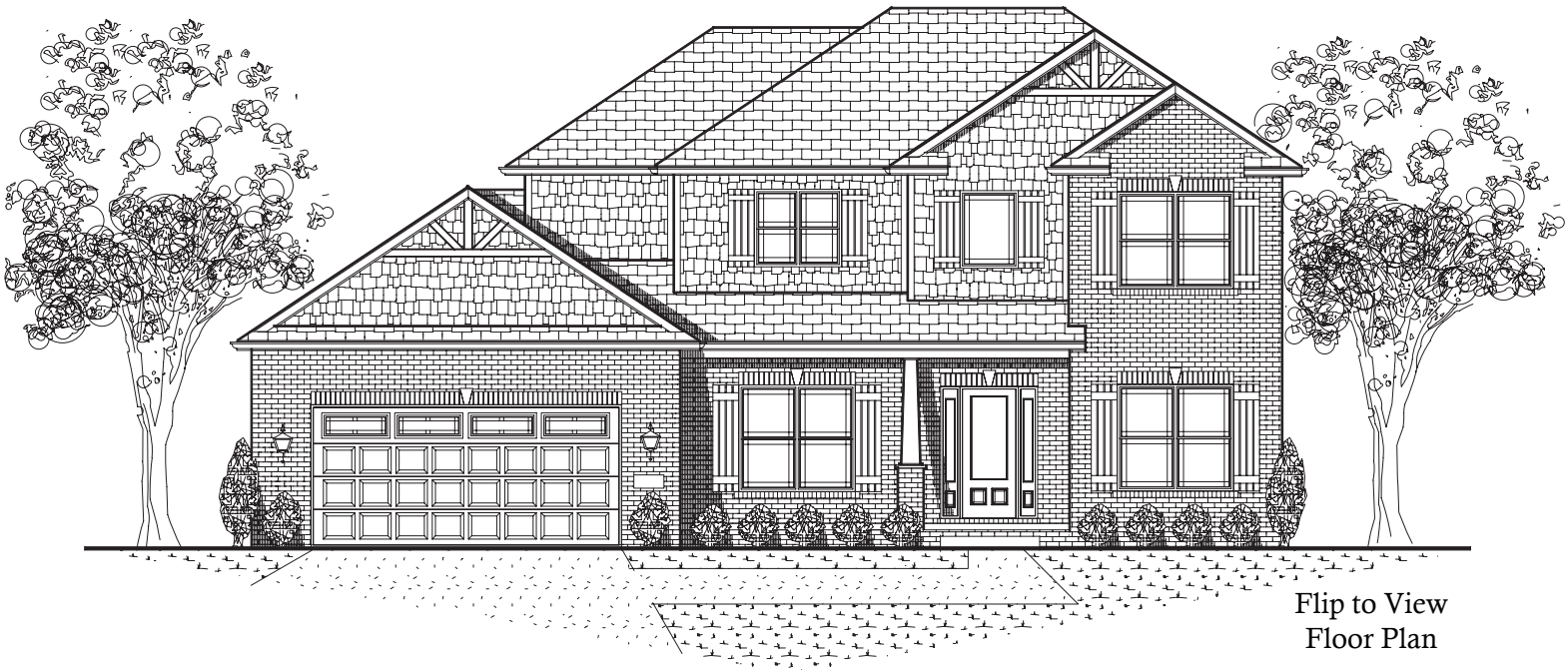


The Ridgemont



Flip to View
Floor Plan

Lot 161 Prairie Meadows Subdivision 311 Banbury Lane. Savoy \$289,900

Home Details

Structure

- 2418 Total Finished Square Footage
- 4 Bedrooms, 2-1/2 baths
- 2 Car Garage with extra storage space
- 9' Tall First Floor Walls

Kitchen Highlights

- Shaker Style Cabinetry
- Large Kitchen Island
- Additional Pantry Closet
- Clean Steel GE Appliances

Other Highlights

- Satin Nickel Fixtures and Trim
- Master Suite with raised stepped ceiling
- Master Bath with Jetted Tub and Shower
- Unique Split Staircase
- 2 Story Foyer
- Direct Vent Fireplace with Built in Cabinets
- Formal Dining Room and Separate Study
- Drop Zone Custom Lockers

Built Smart

Energy Efficient Design

- High Efficiency HVAC Equipment
- Tankless Water Heater
- Low E Windows
- Energy Star Appliances
- Programmable Thermostat
- R38 Ceiling Insulation
- Air Sealed Building Envelop

Smart Construction Details

- Water Tight Drainage Plane Design
Including:
 - Exterior Door Sill Pans
 - Vycor Window Flashing with Beveled Cedar Sill's
- Engineered Wall Studs in Kitchens for Straighter Walls

Ask for Steve Meid - Builder

4120 Belmont Point. Champaign, IL 61822

Office: 217.355.1202 Mobile: 217.202.1248

www.signaturehomes.ws