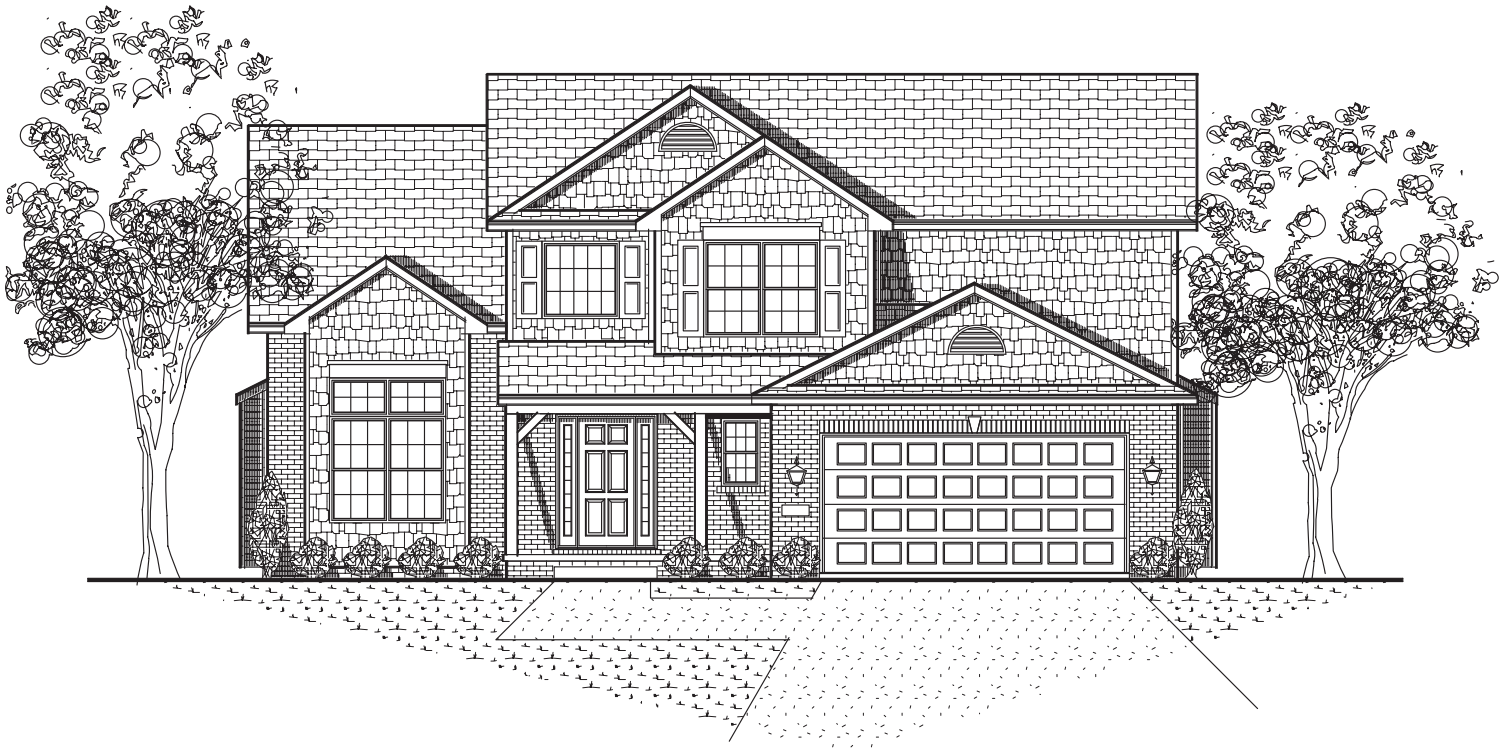


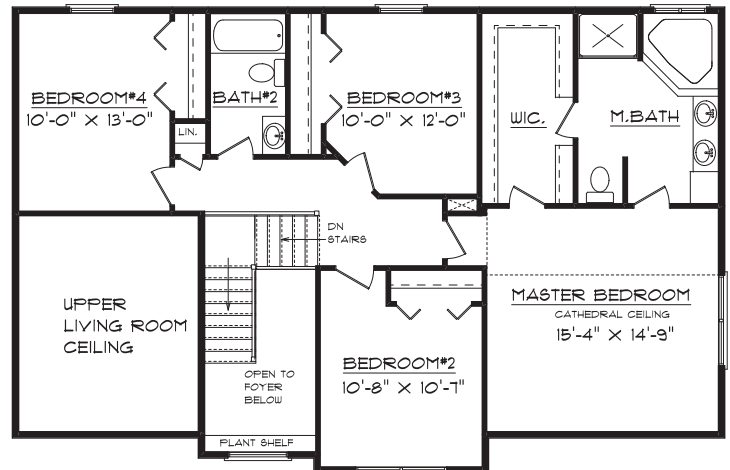
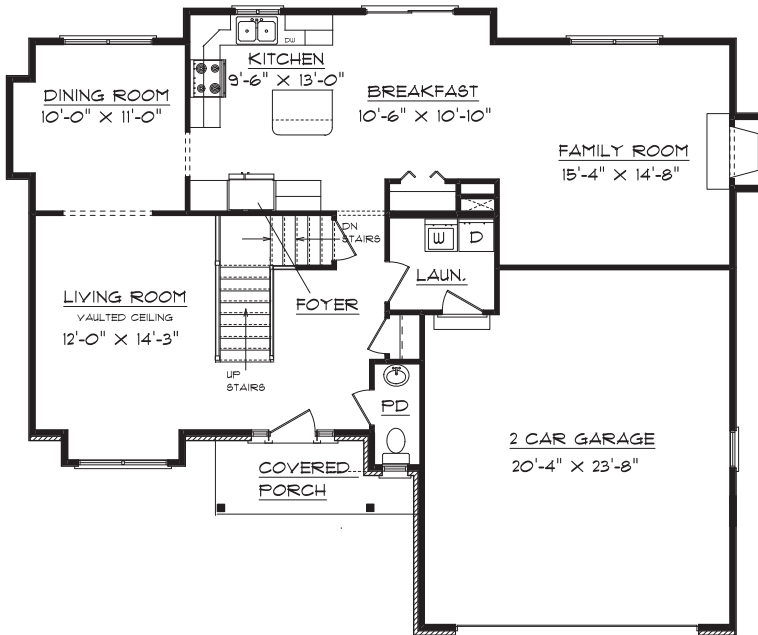
Oakmont



HOME INFORMATION

8 Dry Sage Circle Bloomington, IL
Lot 131 Harvest Pointe

Price: SOLD!
Available: Ready to move in



PLAN SUMMARY

First Floor	1112 Sq.Ft	
Second Floor	1088 Sq.Ft	Width 50'6"
TOTAL	2200 Sq.Ft.	Depth 41'4"
Basement	Unfinished	



Matt Moore/ Bulder www.signaturehomes.ws
1607 Visa Drive Suite 7 Normal, IL 61761
Telephone (309) 275-4014 Fax (309) 862-0526