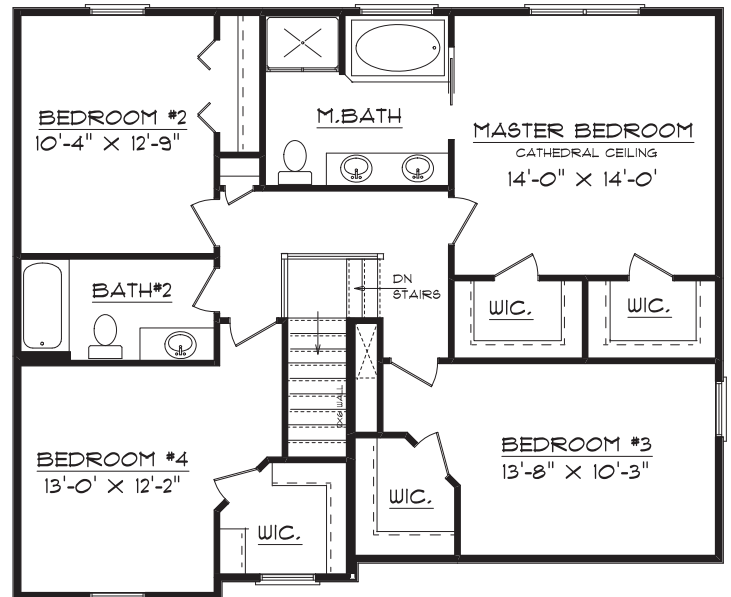


# 12 Dry Sage Circle Bloomington, IL 61704

## Plan Summary

First Floor	974 Sq. Ft.
Second Floor	1145 Sq. Ft.
TOTAL	2119 Sq. Ft.
Basement	488 sq. ft. Finished



**The Brompton**

1607 Visa Drive Suite 7, Normal, IL 61761  
Office: 309. 862.0525 Fax: 309. 862.0526  
[www.signaturehomes.ws](http://www.signaturehomes.ws)