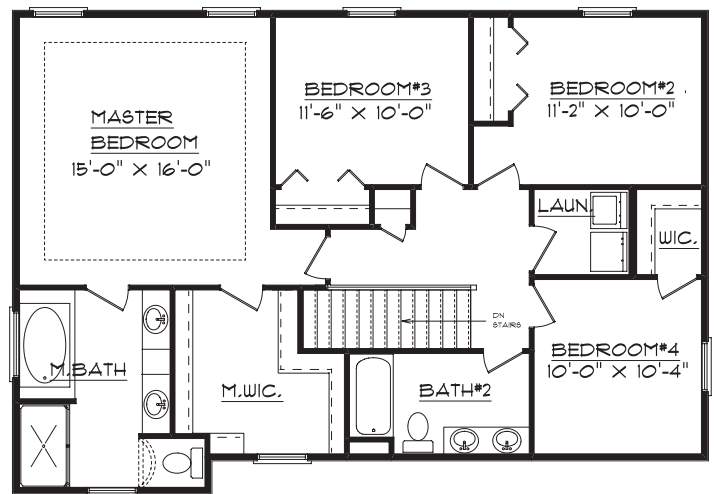


# 20 Dry Sage Circle Bloomington, IL 61704

## Plan Summary

First Floor	1103 Sq. Ft.
Second Floor	1105 Sq. Ft.
TOTAL	2208 Sq. Ft.
Basement	Unfinished



**The Martin**

1607 Visa Drive Suite 7, Normal, IL 61761  
Office: 309. 862.0525 Fax: 309. 862.0526  
[www.signaturehomes.ws](http://www.signaturehomes.ws)