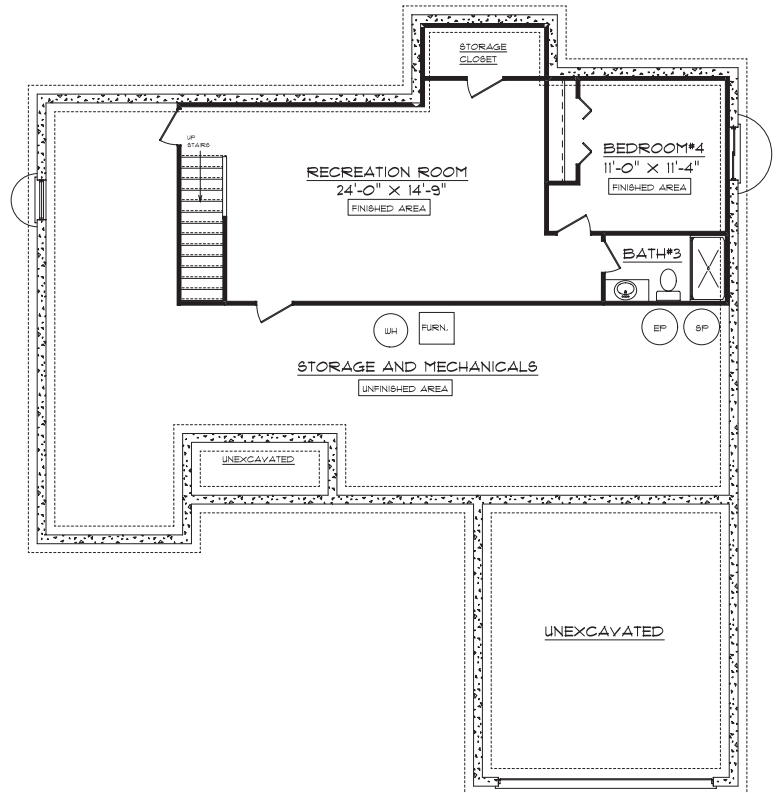


28 Dry Sage Circle Bloomington, IL 61704

Plan Summary

| | |
|--------------|-----------------------|
| First Floor | 1748 Sq. Ft. |
| Second Floor | 0 Sq. Ft. |
| TOTAL | 1748 Sq. Ft. |
| Basement | 1101 Finished Sq. Ft. |



The Kensington

1607 Visa Drive Suite 7, Normal, IL 61761
 Office: 309. 862.0525 Fax: 309. 862.0526
www.signaturehomes.ws