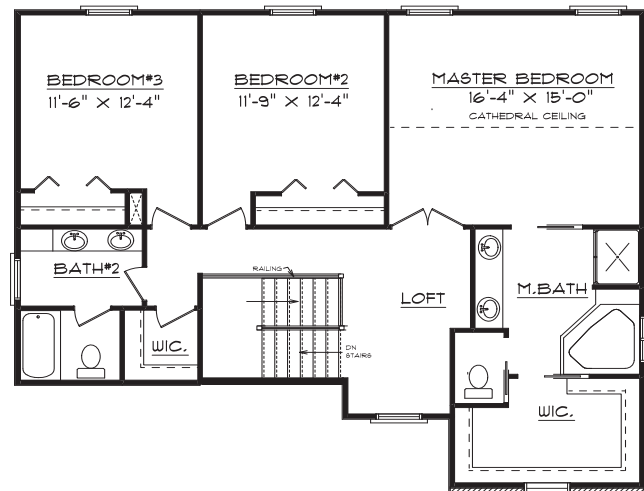
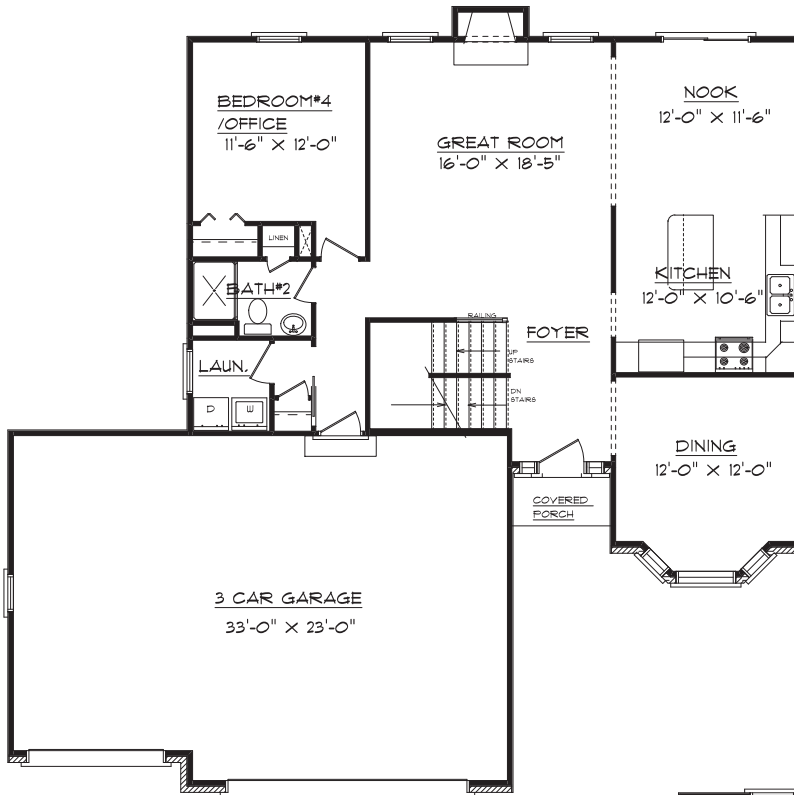




THE LEXINGTON 5 DRY SAGE CIRCLE



Plan Highlights

First Floor	1212 Square Feet
Second Floor	1209 Square Feet
Total	2421 Square Feet
Fin. Basement	Unfinished

1607 Visa Drive Suite 7. Normal, IL 61761
Office: 309.862.0525 Fax: 309.862.0526
Please visit our website www.signaturehomes.ws