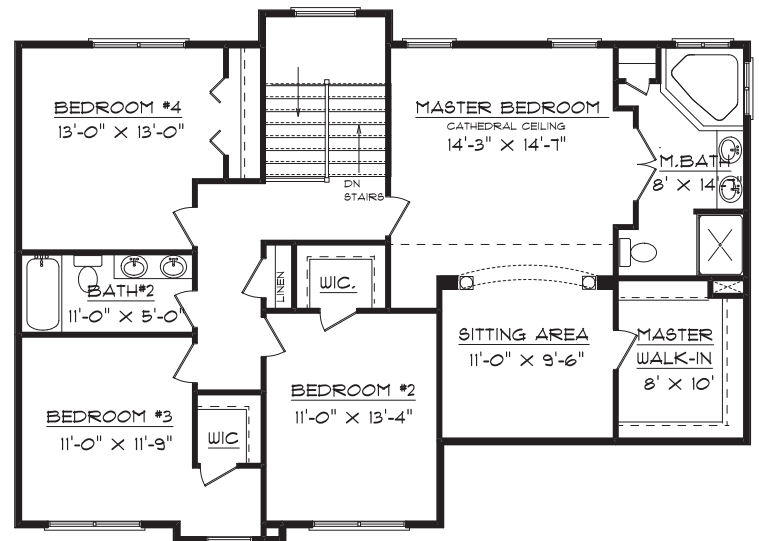
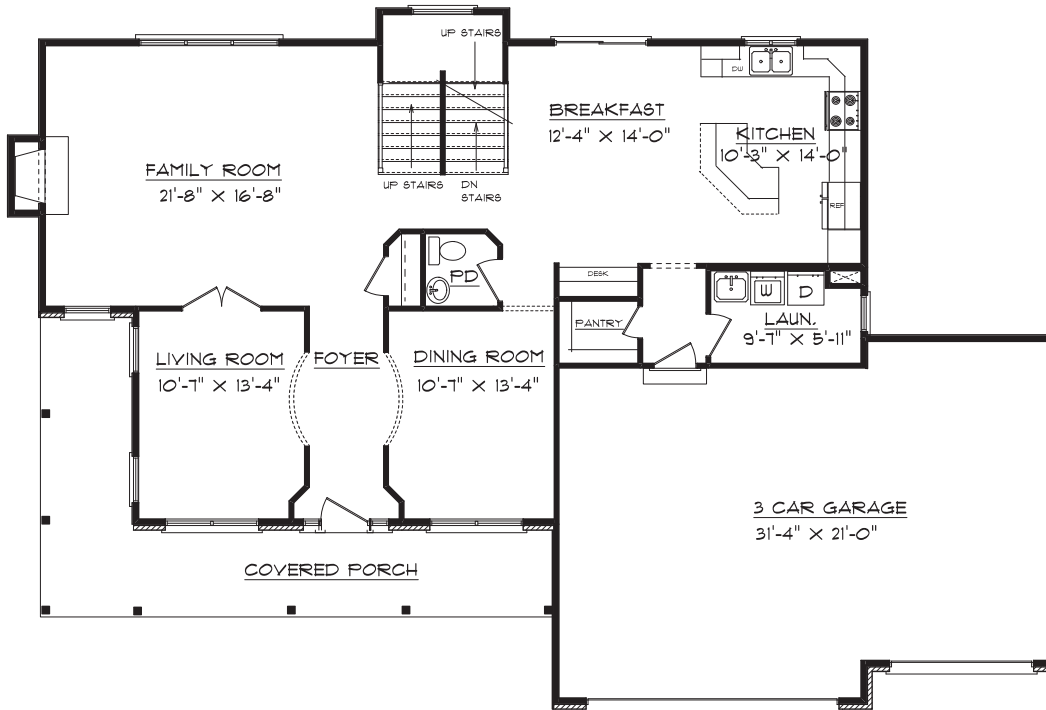




# THE CARRINGTON 4 NORTH HOLLOW ROAD



## *Plan Highlights*

<b>First Floor</b>	<b>1403 Square Feet</b>
<b>Second Floor</b>	<b>1311 Square Feet</b>
<b>Total</b>	<b>2714 Square Feet</b>
<b>Fin. Basement</b>	<b>1265 Square Feet</b>

1607 Visa Drive Suite 7 Normal, IL 61761  
Office: 309.862.0525 Fax: 309.862.0526  
Please visit our website [www.signaturehomes.ws](http://www.signaturehomes.ws)