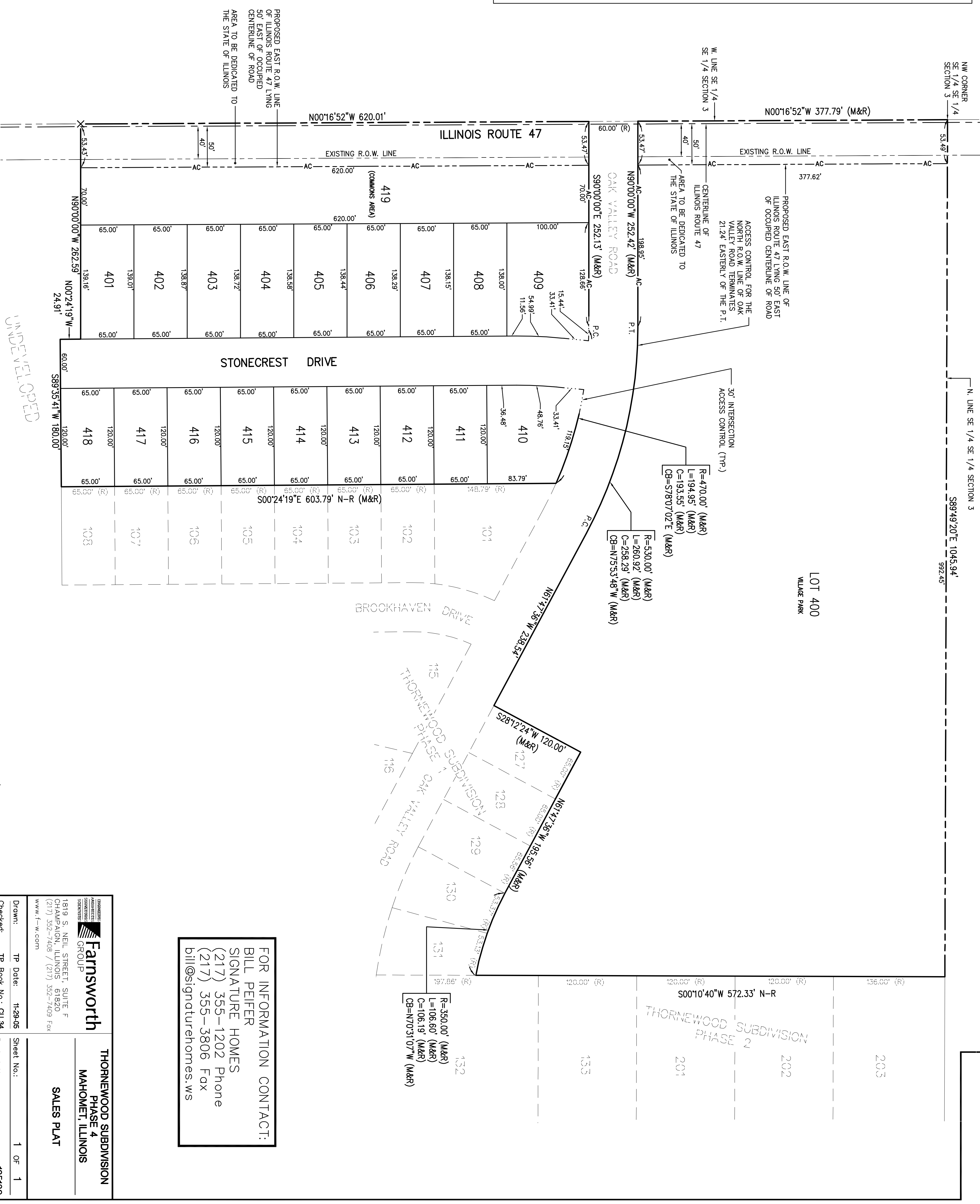
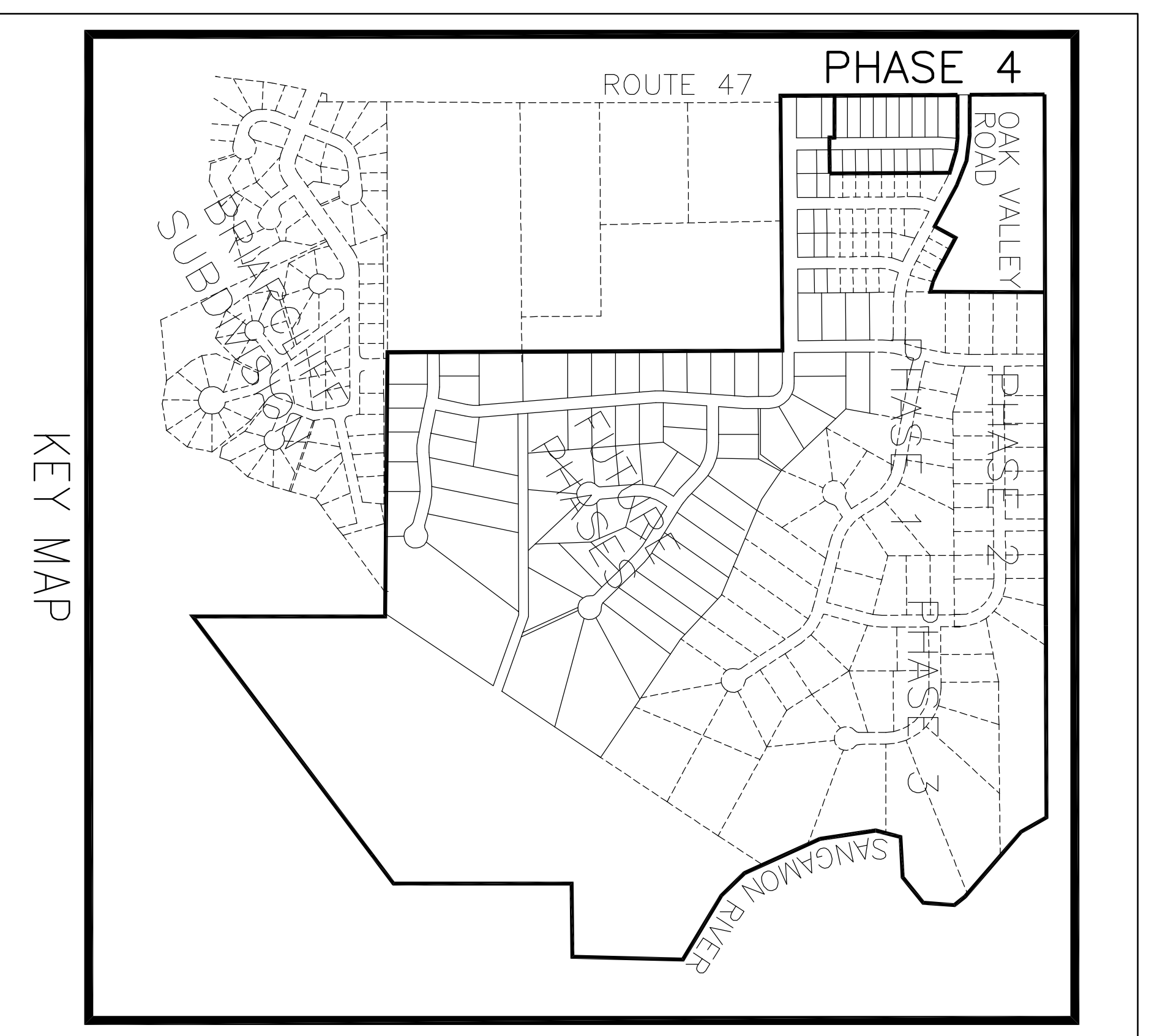




THORNEWOOD SUBDIVISION PHASE 4

A PART OF THE SE 1/4 OF THE SE 1/4 OF SECTION 3
TOWNSHIP 20 NORTH, RANGE 7 EAST OF THE THIRD PRINCIPAL MERIDIAN
VILLAGE OF MAHOMET, CHAMPAIGN COUNTY, ILLINOIS



ENGINEER/SURVEYOR
FARNSWORTH GROUP, INC.
1819 SOUTH NEIL STREET, SUITE F
CHAMPAIGN, ILLINOIS 61820
(217) 352-7408

OWNER/SUBDIVIDER
MAHOMET LAND COMPANY
101 SOUTH LINCOLN
MAHOMET, ILLINOIS 61853

PROPOSED EAST R.O.W. LINE
OF ILLINOIS ROUTE 47 LYING
50' EAST OF OCCUPIED
CENTERLINE OF ROAD
AREA TO BE DEDICATED TO
THE STATE OF ILLINOIS

UNDEVELOPED

FOR INFORMATION CONTACT:
BILL PEIFER
SIGNATURE HOMES
(217) 355-1202 Phone
(217) 355-3806 Fax
bill@signaturehomes.ws

<p>Farnsworth GROUP 1819 S. NEIL STREET, SUITE F CHAMPAIGN, ILLINOIS 61820 (217) 352-7408 / (217) 352-7409 Fax www.f-w.com</p>	<p>THORNEWOOD SUBDIVISION PHASE 4 MAHOMET, ILLINOIS</p>
	<p>SALES PLAT</p>
<p>Drawn: TP Date: 1-28-06</p>	<p>Sheet No.: 1 OF 1</p>
<p>Checked: TP Book No.: CU 34</p>	<p>Project No.: 105189</p>