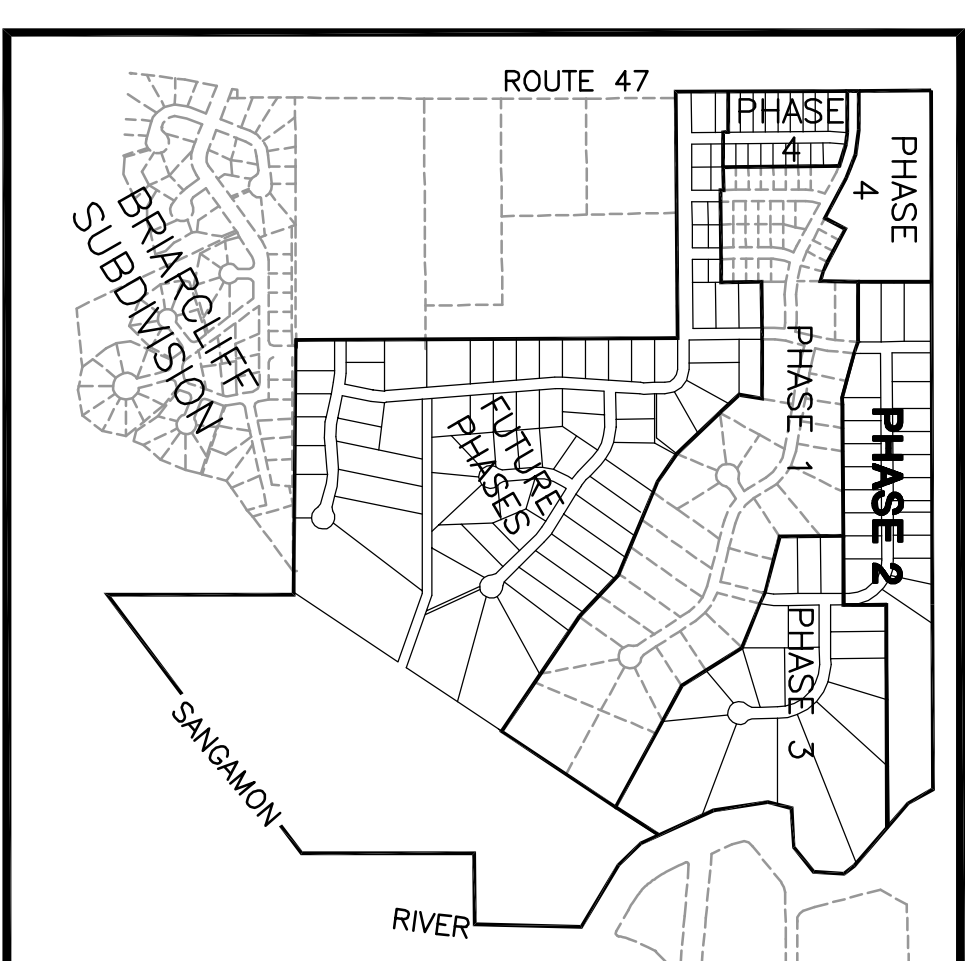
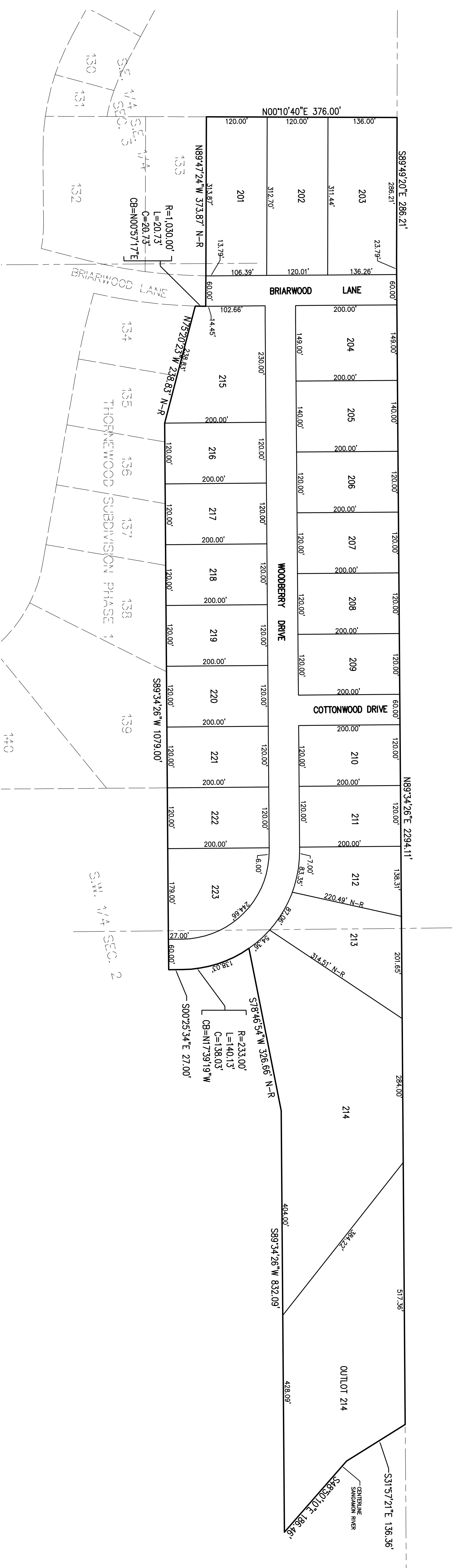


THORNEWOOD SUBDIVISION PHASE 2

PART OF THE SOUTHEAST QUARTER OF THE SOUTHEAST QUARTER OF SECTION 3 AND PART OF THE SOUTHWEST QUARTER OF SECTION 2,
ALL IN TOWNSHIP 20 NORTH, RANGE 7 EAST OF THE THIRD PRINCIPAL MERIDIAN
VILLAGE OF MAHOMET, CHAMPAIGN COUNTY, ILLINOIS



FOR INFORMATION CONTACT:
 BILL PEIFER
 SIGNATURE HOMES
 (217) 355-1202 Phone
 (217) 355-3806 Fax
 bill@signaturehomes.ws

OWNER/SUBDIVIDER
 MAHOMET LAND COMPANY
 101 SOUTH LINCOLN
 MAHOMET, ILLINOIS 61853

ENGINEER/SURVEYOR
 FARNSWORTH GROUP, INC.
 1819 SOUTH NEIL STREET, SUITE F
 CHAMPAIGN, ILLINOIS 61820
 (217) 352-7408



**THORNEWOOD SUBDIVISION
 PHASE 2
 MAHOMET, ILLINOIS**

1819 S. NEIL STREET, SUITE F
 CHAMPAIGN, ILLINOIS 61820
 (217) 352-7408 / (217) 352-7409 Fax
 www.f-w.com

SALES PLAT