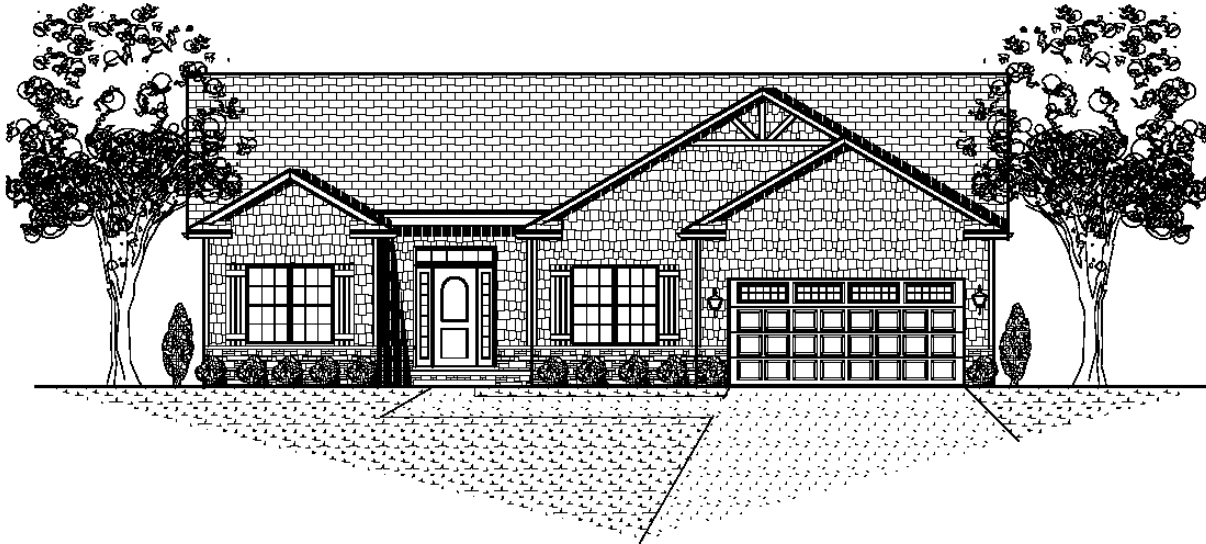


The Kensington



1306 Shaunessey Drive - Gaelic Place West - Bloomington
\$269,900

Home Details

Structure

- 4 Bedrooms, 3 baths
- 2 Car Garage
- Finished Basement
- 9' High First Floor Ceilings

Kitchen Highlights

- Maple Cabinetry
- Granite Tops
- patio off kitchen

Other Highlights

- Satin Nickel Fixtures and Trim
- Great room w/custom ceiling
- Master Suite with walk in closet
- Recreation room in basement
- Wood flooring throughout
- Custom closets throughout

Built Smart

Energy Efficient Design

- High Efficiency HVAC Equipment
- High Efficiency Water Heater
- Low E Windows
- Energy Star Appliances
- Programmable Thermostat
- R38 Ceiling Insulation

- Air Sealed Building Envelop

Smart Construction Details

- Water Tight Drainage Plane Design

Including:

- Exterior Door Sill Pans
- Vycor Window Flashing with Beveled Cedar Sill's
- Engineered Wall Studs in Kitchens for Straighter Walls

Ask for Teresa Peifer - Builder
1607 Visa Drive Suite 7. Normal, IL 61761
Office: 309-862.0525 Mobile: 309.275.1214

www.signaturehomes.ws