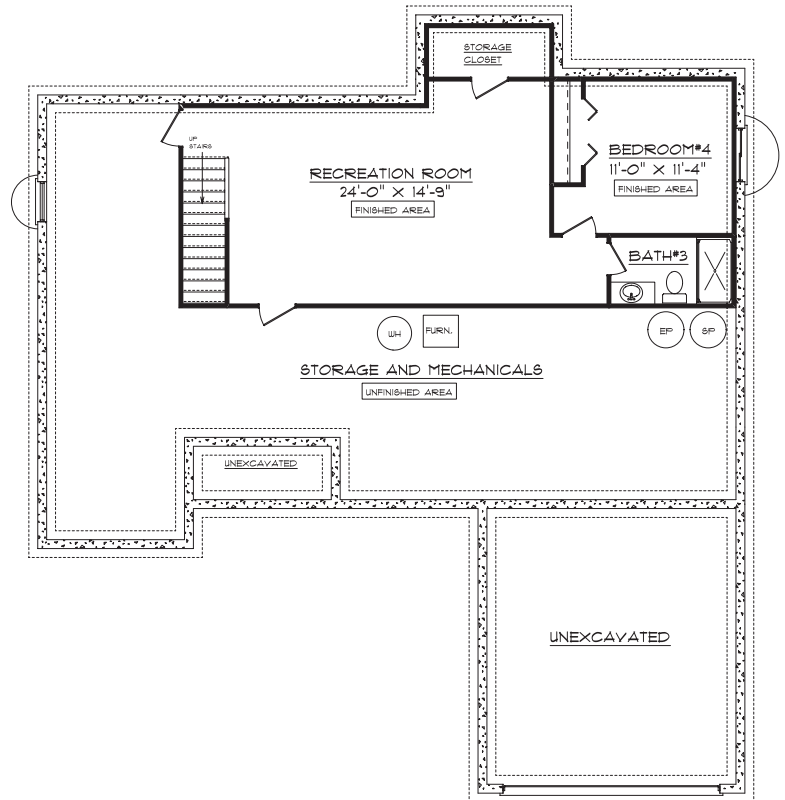


1306 Shaunessey Drive Bloomington, IL 61704

Plan Summary

First Floor	1748Sq. Ft.
Second Floor	0 Sq. Ft.
TOTAL	1748 Sq. Ft.
Basement	686 sq. ft. Finished
Total finished	2434 sq. ft.



The Kensington

1607 Visa Drive Suite 7, Normal, IL 61761
Office: 309. 862.0525 Fax: 309. 862.0526
www.signaturehomes.ws