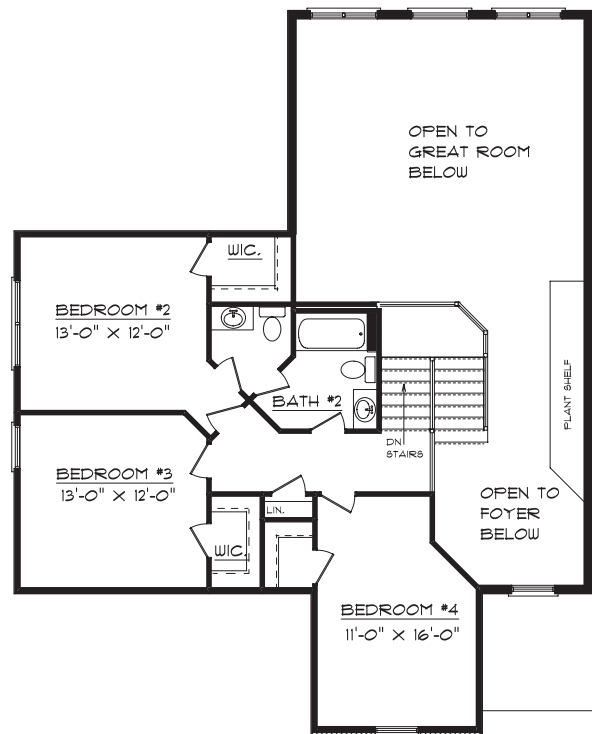




5 Ann Arbor Court Bloomington, IL 61761

Plan Summary

First Floor	2053 sq.ft.
Second Floor	769 sq.ft.
TOTAL	2822 sq.ft.
Basement	1584 Sq. Ft.F inished



1607 Visa Drive Suite 7 Normal, IL 61761
Office: 309.862.0525 Fax: 309.862.0526
www.signaturehomes.ws